

SIGNAGE & WAYFINDING PROGRAM

RIVERS CASINO & RESORT

AT MOHAWK HARBOR

Site Plan Application
Entro Project Number 1182

B Issued For Site Plan Submission **March 18, 2016**
A Issued For Site Plan Submission **May 21, 2015**

Drawing List

Signage Area Summary Table
Sign Location Plan - Wall-mounted Signs
South Elevation
South Elevation - Hotel
East Elevation
North Elevation
West Elevation
Color Palette and Finishes
Sign Location Plan - Freestanding Signs
B1.2 - Vehicular Directional with Identity
B2.1 - Vehicular Directional without Identity
B4.1 - Parking Garage Directional

Signage Area Summary Table

ORIGINAL APPROVED (May 21, 2015)

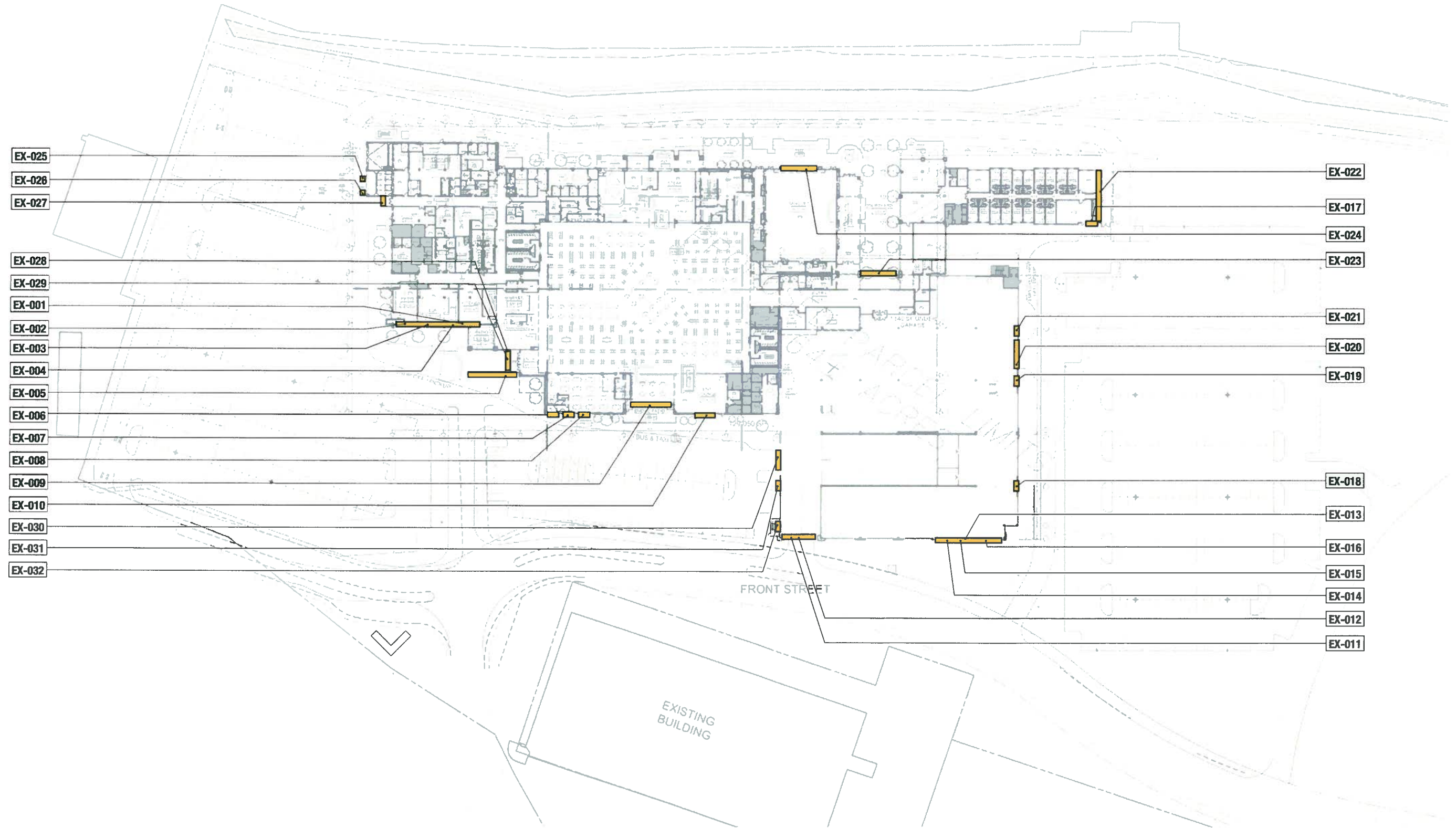
ELEVATION	SQ FT PER ELEVATION
South	7,434 sq.ft.
East	3,106 sq.ft.
North	1,536 sq.ft.
West	1,230 sq.ft.
Wall-mounted Signs	13,306 sq.ft.
Pylon	1,622 sq.ft.
Rivers Casino Mohawk Harbor Total Square Footage of Wall-mounted and Pylon Signage	14,928 sq.ft.

CURRENT (March 18, 2016)

ELEVATION	SQ FT PER ELEVATION
South	5,463 sq.ft.
East	1,118 sq.ft.
North	0 sq.ft.
West	898 sq.ft.
Wall-mounted Signs	7,479 sq.ft.
Rivers Casino Mohawk Harbor Total Square Footage of Wall-mounted Signage	7,479 sq.ft.

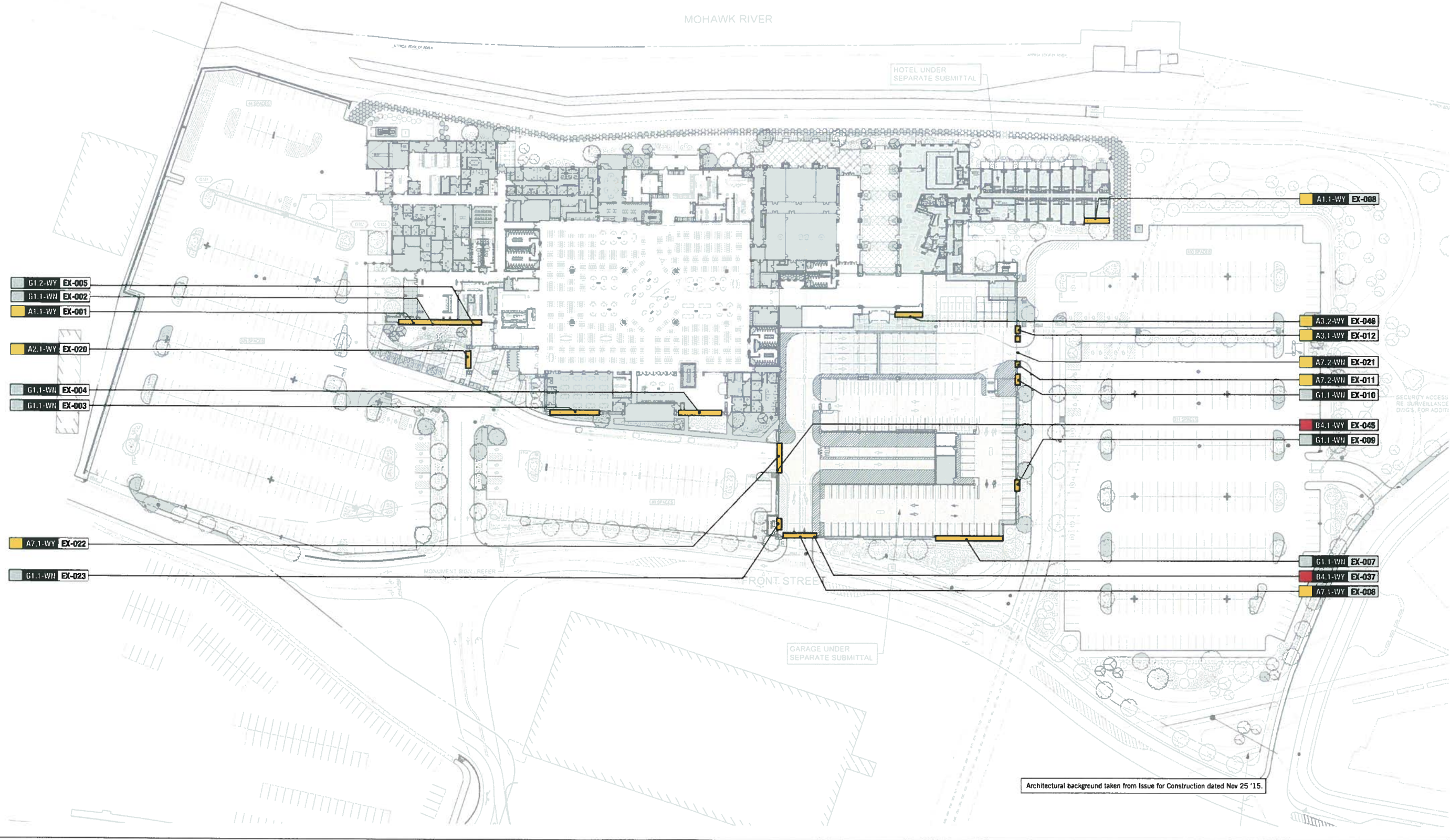
Sign Location Plan - Wall-mounted signs (1 of 2)

ORIGINAL APPROVED

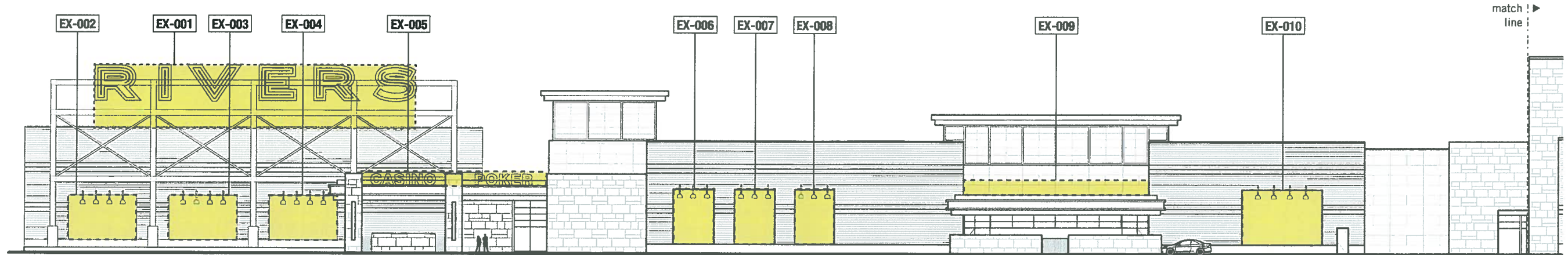
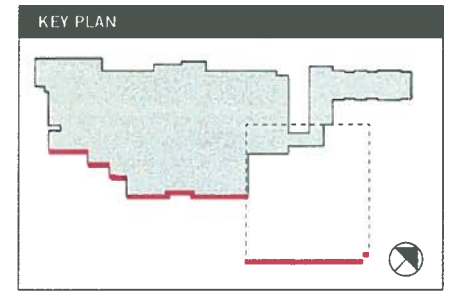


Sign Location Plan - Wall-mounted signs (2 of 2)

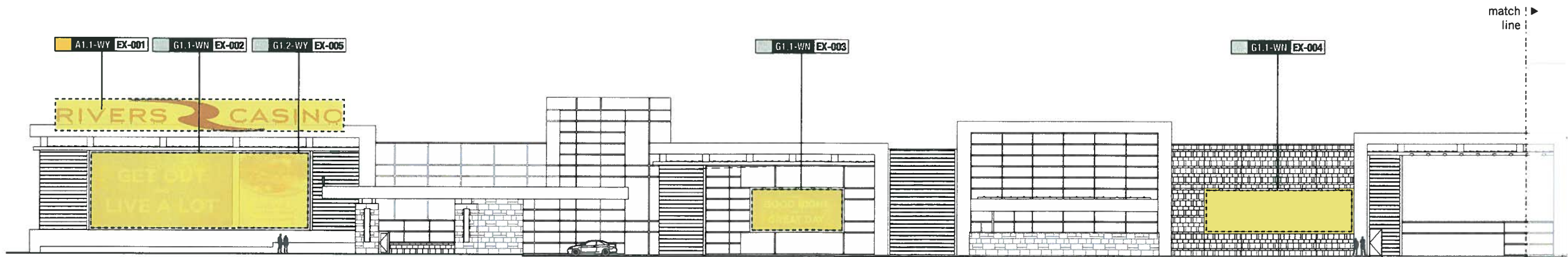
CURRENT



South Elevation (1 of 4)



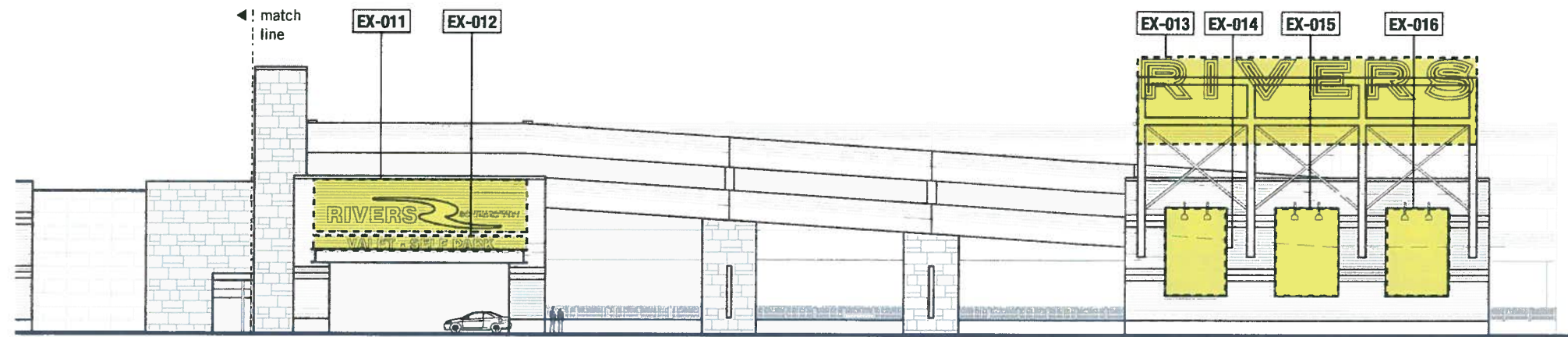
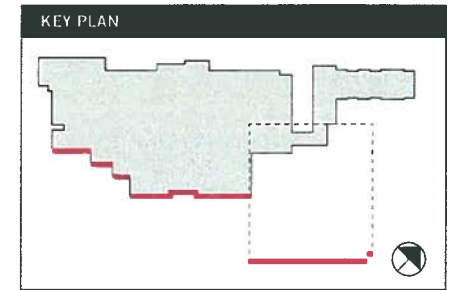
ORIGINAL APPROVED



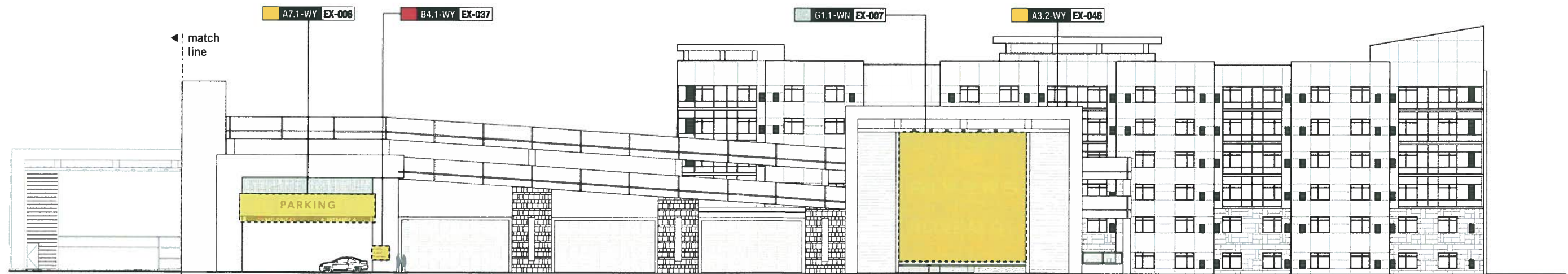
CURRENT

SOUTH ELEVATION
Scale: 1/32" = 1'-0"

South Elevation (2 of 4)



ORIGINAL APPROVED



CURRENT

SOUTH ELEVATION
Scale: 1/32" = 1'-0"